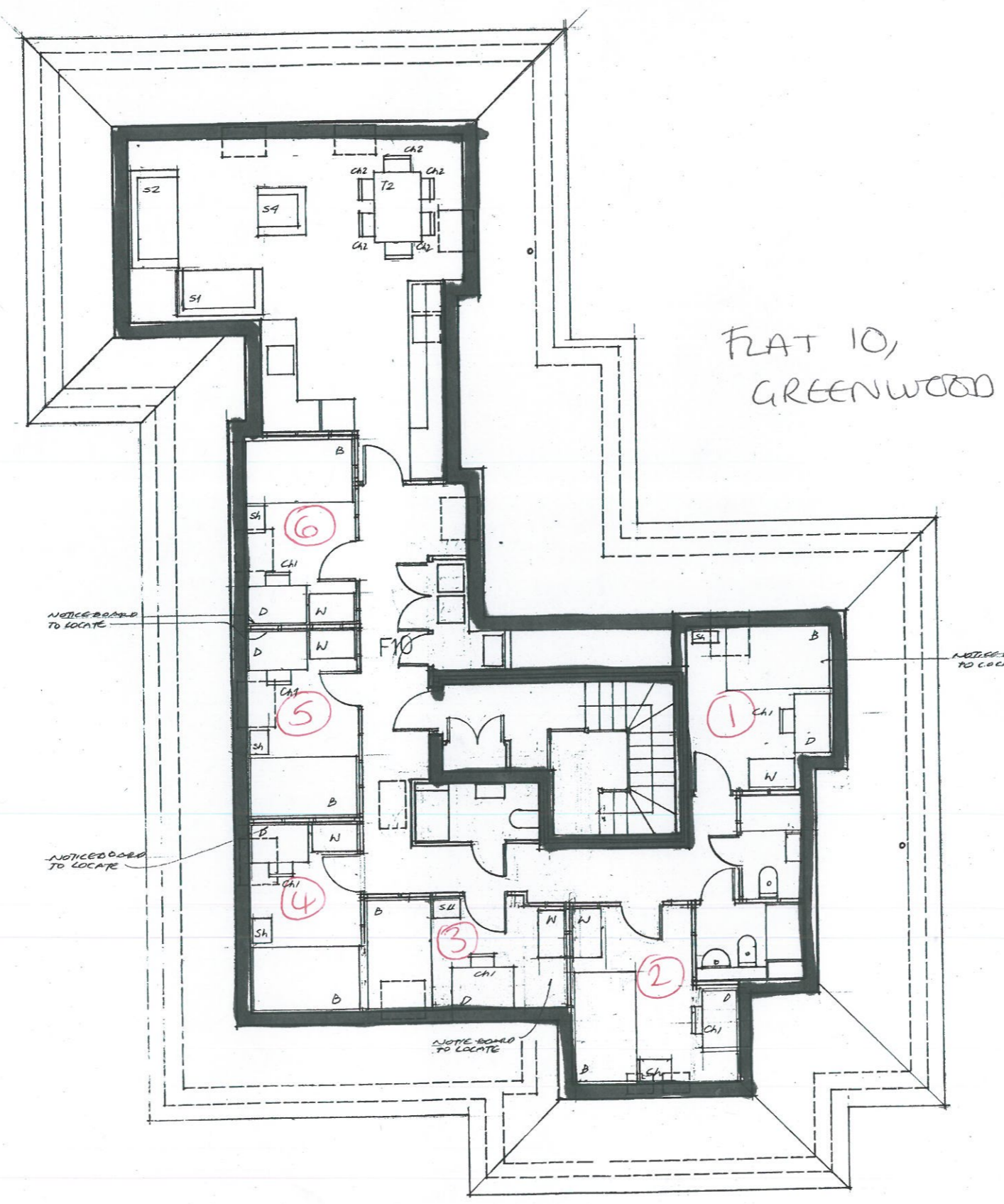


KEY TO FURNITURE ITEMS	
S1	- 2 Seater Sofa (165L x 90D x 86H)
S2	- 3 Seater Sofa (1890L x 90D x 86H)
S3	- 4 Seater Sofa
S4	- Single chair (95L x 90D x 86H)
FS	- Footstool (80L x 60D)
CH1	- Desk Chair
CH2	- Dining Chair
D	- Desk (1200mm x 700mm)
W	- Wardrobe (1820 x 915 x 540mm)
SH	- Shelves (630mm x 270mm)
T1	- Dining Table (70L x 50W)
T2	- Dining Table (129L x 90W)
N	- Notice board
B	- 4' Bed
B2	- 4'6" Bed
BT	- Bedside Table
CD	- Chest of Drawers
M	- Mirror (600 x 1800mm)
Sh	- Shoe Rack



C. 30.12.20 SHOWER ROOM REVISION
 B. 23.9.19 WH/TO RELOCATED
 SHOWER ROOM / BEDROOM'S VAN
 A. 3.6.19 CONTRACT ISSUE
 REVISIONS

project	
Student Development, Sarum Road Winchester, Hants, SO22 5DR	
dwg	date
Building 2	Feb-
Third Floor- Furniture Layout	
scale	
1:50	
dwg no.	
0104.0254	